



DHRISHA INDUSTRIES

OUR CONCERN IS **QUALITY**
NOT QUANTITY



All Types Manufacturing
Textile Processing Machinery

Company Profile

Dhrisha Industries company founded in 2019 and based in Gujarat, India. As a world leader in the manufacture of process lines for the Textile processing industry, we focus on product development, continuous improvement, innovation, sustainable technology and co-operation to ensure, we give added value to every customer. We respect our team, our customers, and the environment.

With a team of qualified personnel we innovate, design, manufacture and install advanced processing lines worldwide. We specialize in Soft Floe, Jet Dyeing, Yarn Dyeing products.

Dhrisha Industries soft flow are capable of dyeing several variety of fabric from low gsm to high gsm, It alos has double rope dyeing technology.

In incorporating a new and never technology which reduce the process time and total energy consumption at same time enhancing quality of the processed material

■ Our Infrastructure

We uphold a state-of-the-art infrastructure base which conforms to the standards of international level in terms of various kinds of facilities. Our manufacturing unit is spread over a total plot area of 110 ft X 130 ft, with optimum installed capacity that is sufficient to prove our capacity in terms of robust infrastructure. We have equipped this spacious unit with necessary machines and equipment that facilitate flawless production of our wide range of food processing machines.

■ Our Strenth

Dhrisha Industries strength is to deliver total solutions in Snacks processing from the in feed of product to the packaging line resulting in a high quality end product. Our success is achieved by working in total co-operation with our customers to achieve their specific requirements, We aim to get the best out of the product and the customers process line.

Low Liquor Ratio Colour Charge HT Sample Dyeing Machine

Capacity Rang :

10, 25, 50, 75, 100, 180 Kg.

Nozzale Size :

140mm & 200mm



Business Success

We provide products, experience and knowledge to help your company succeed.



H.T. H.P. SOFT FLOW DYEING MACHINE



Standard Feature :

- Machine body and major parts wetted by dye liquid made of Stainless Steel 316 L highly corrosion and acid resistance.
- Highly efficient Vertical Heat Exchanger for fast heating and cooling and prevent scale formation.
- Highly efficient heavy duty stainless steel centrifugal pump with frequency control and also mechanical seal to avoid leakage.
- Machines are control via Industrial PLC with Air Conditional S.S. Control Panel to avoid the moisture formation inside the panel.
- Automatic Adjustable nozzle based on fabric nature.
- Mechanical Lock working with vessel internal pressure impact.
- Smart Dosing and Salt Dosing Function.
- Observing window with stainless metal grid.
- Internal main body washing system.
- LED Lighting System inside the main body.
- Seam Detection and cycle control system.
- Additional tank to reserve tank transfer.

Technical Data:

- Stainless steel 316 L highly corrosion and acid resistance body.
- Maximum working temperature 140°C.
- Inner rotating fabric chamber for smooth and secure fabric transport.
- **Heating Rate:-**
25° c - 100°c average 4°c/min.
100c - 130c average 2°c/min.
- **Cooling Rate:-**
130° c - 100°c average 3°c/min.
100° c - 85°c average 23c/min.

500 KG. SOFT FLOW MACHINE



Adjustable Nozzle System

Each nozzle equipped with adjustment system controlled by individual actuator. Nozzle position can be adjusted as stepless by this actuator. A wide variety of fabrics can be dyed in tubular and open width form as free from any penetration problem by means of adjustable nozzle system.

Lid System

The Loading/unloading lids equipped with automatic safety locking system

Automatic Process Control System

Automatic control of all dyeing processes. All machine parameters, dosing function, pump speed, inner reel speed, heating/cooling system, nozzle position, fabric cycle time, etc. can be controlled easily via operator control panel.

Side Tanks

Two side tanks for dyestuff and chemical materials. Both tanks equipped with heating system, stirrer and level measuring system. Dosing function (linear, progressive) is performed automatically by means of dosing pump and related valve.

Inner Reel

Each inner reel is driven by an individual frequency controlled motor. Reel speed up to 450 m/min. Excellent mechanical durability of inner reel mechanism by means of reel shaft and bearing house design. The mechanical seals and problem-free for a very long time by this Mechanism

Stock Tank (Optional)

1:4 liquor volume capacity stock tank located in horizontal position. Equipped with circulation pump, heating system and level measuring system. The hot water required for the next step of the process is prepared in this tank of the desired temperature.

Plaiter System

Frequency controlled plaiter system is synchronised with inner reel speed. It ensures stacking of the fabric evenly in the J-fabric basket. It is available for 200 kg and 250 kg J-fabric baskets.

Main Circulation Pump

High efficiency circulation pump made of stainless steel frequency controlled pump speed

Proportional Heating And Cooling System

The heating and cooling gradients are adjusted to desired values by means of proportional valve and the valve position is controlled by IP converter.

"U" TYPE JET DYEING MACHINE WITH REEL & INVERTER DRIVE



The "U" Tube Fabric Dyeing Machines represents a significant development in short liquor ratio dyeing technology, at the since time meeting today's demands for environmental friendly and cost effective production.

Standard Feature :

- Machine body and parts wetted dye liquid made of 316 / 316 L highly corrosion resistant stainless steel.
- Heavy duty stainless steel centrifugal pump for fast dye liquor circulation
- Lifter reel driven by frequency inverter controlled motor for speed up to 400-450 m / min
- Service tank with injector and valve system
- Highly efficient heat exchanger for fast heating and cooling
- Take-off-roller (Platter) made stainless steel 304 quality



We are engaged in manufacturing, supplying of HTHP Yarn Dyeing Machine / HTHP Yarn Dyeing Yarn Machine 100 kg is used for dyeing yarn at high temperature and high pressure. Our expert technicians ensure that it is manufactured using fine grade material, procured from the most authentic vendors of the industry. The body of the machine is fabricated using high grade stainless steel in order to assure durability and resistance to corrosion. We fabricate these machines using premium quality raw material that is procured from the most credible vendors of the industry.

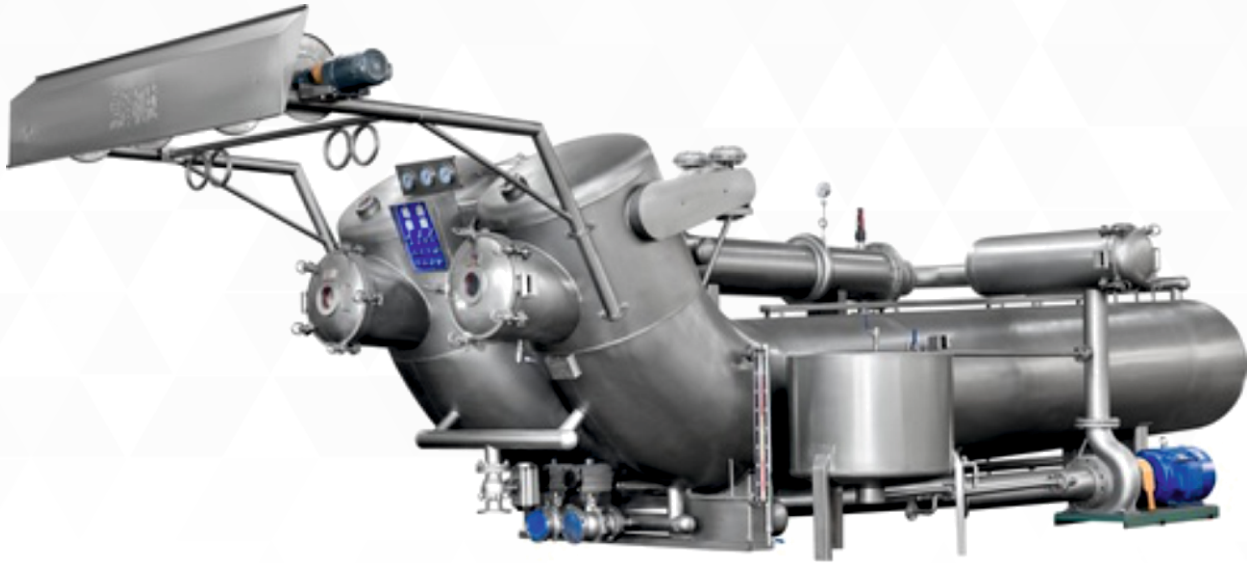
Main Feature :

- Capacity from 30kg to 500 kg
- Very low liquor ratio from 1:3 to 1:5
- Loading up to 30% possible
- Savings of water, chemical, heat & electrical energy
- Coil type heat exchanger for efficient and fast heat transfer
- Design ensures complete drain of liquor
- Pneumatic cylinder lift door with Heavy Clamp locking system
- Hydraulic safety locking for door
- Large Saving of capital and operational cost

Application :

- Yarn Packages
- Zipper Tapes
- Small width Fabrics
- Warn Beams

HTHP LONG TUBE FABRIC DYEING MACHINE



HIGH SPEED LONG TUBE RAPID DYEING MACHINE

The LTRD 200 high speed dyeing machine is prime choice for the dyeing of light to heavy weight woven and knitted fabrics, which is sensitive to creases marks such as polyester and micro fibers etc.

The fabric weight per linear meter is ranging from 30 to 650 g/m. fabric speed can be achieved up to 600m/min.

A fully flooded transport system combined with an adjustable nozzle and infinitely adjustable winch, allowing fabric speed up to 600m/min.

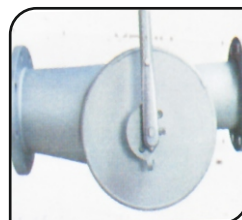
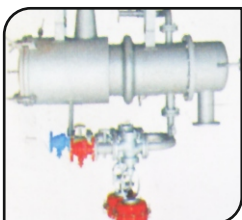
The flooded chambers ensure, even with high loading, a positive and smooth fabric transport. The highly efficient heat exchanger is an ideal supplement to the fabric speed, ensuring the shortest possible dyeing cycle.

Design Speciality

- High fabric Speed : Maximum fabric speed of 600 m/min ensures that the optimum loading is achieved within 2 minutes of fabric turn around time.
- Fast bath turnover time : The circulation pump provides high flow rate to complement the high fabric speed.
- Large Kier : The fabric speeds over the whole length of the kier so that the fabric is not subject to high stack loading, this reducing the formation of creases mark.
- Reversing Nozzle : Eject the fabric rope back into the kier to release the tangling automatically.

Standard Features :

- Machine body and major parts wetted by dye liquid made of stainless steel 316/316L highly corrosion and resistant.
- Heavy duty stainless steel (Investment casting) centrifugal pump (High flow rate) for fast dye liquid circulation
- Inside reel (Liner Reel) driven by frequency inverter controlled motor.
- Highly efficient heat exchanger for fast heating and cooling.
- Reversing nozzle ejects the fabric rope back to release the tangling automatically.
- Frequency inverter drive for main pump.
- Control panel with micro processor based programmer.
- Take off reel
Service platform.



DYEING JIGGER MACHINE



Standard Feature :

- Capacity 150Kgs. to 750Kgs.
- Complete Stainless Steel Body
- Heavy Duty Bearing Type Brake Drum
- Heavy Duty Differential Gear Unit
- A.C. Frequency Drive
- Dye Circulation with Chemical Pump (Optional)
- Temperature Controller (Optional)
- Auto Forward Reverse (Optional)
- The Machines are available from 1250 mm to 4000 mm width



97120 22782



97264 93789



salesdhrishaindustries@gmail.com



Plot No. 331/3, Shakriba Estate, B/H. Indo German Tool Room,
Phase IV, Vatva G.I.D.C., Ahmedabad-382445 (Guj.) INDIA.



DHRISHA
INDUSTRIES